

Rapid Needs Assessment Priorities



FEMA

Objectives

At the end of this unit participants will be able to:

- Describe the process for staffing a rapid needs assessment.
- Describe the basic tools required to support the rapid needs assessment process.



FEMA

Planning

After you have identified potential key problem areas, you must plan for an organized assessment process



FEMA

Group Activity 2

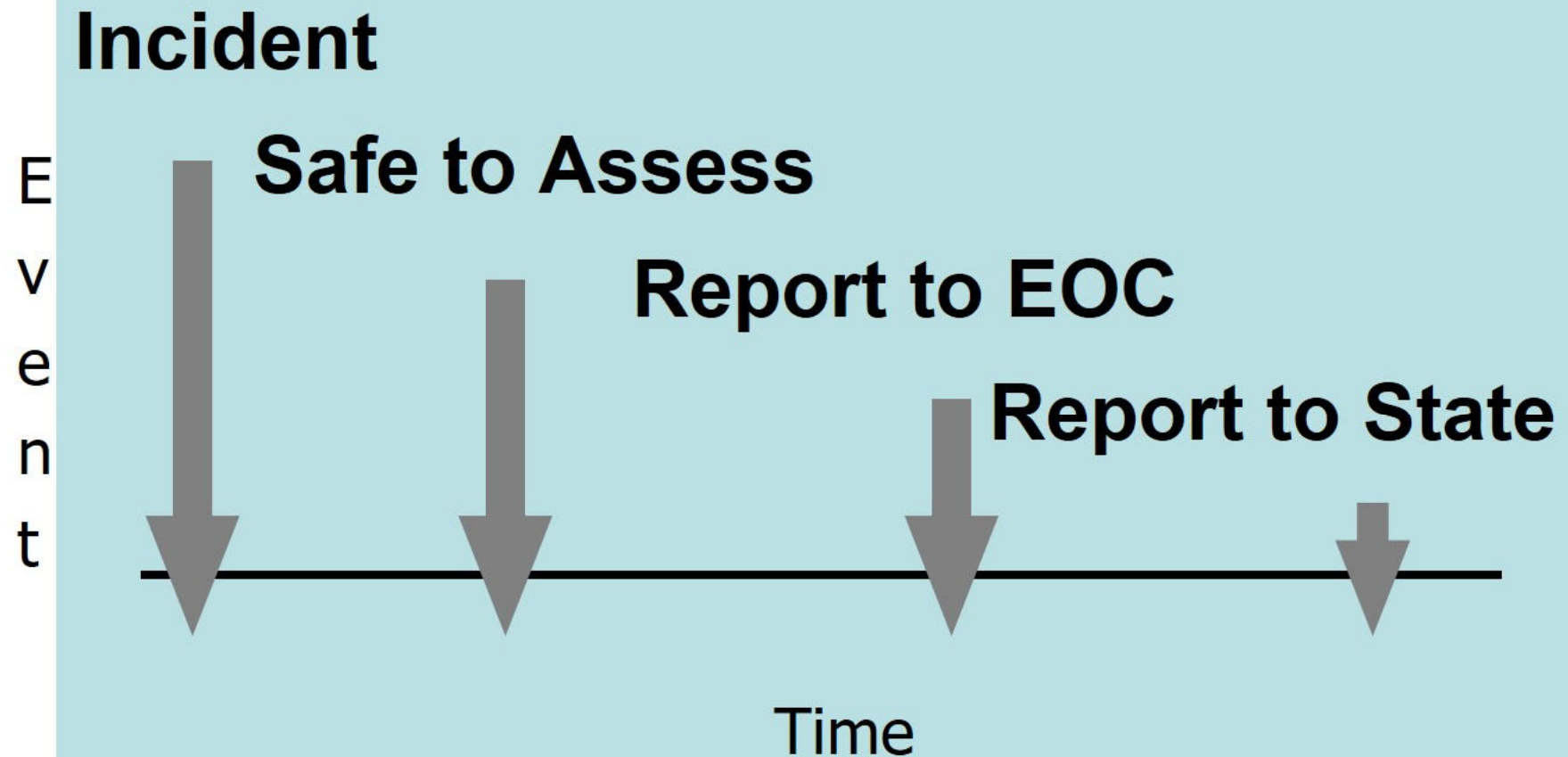
Review the next visual:

- Based on a probable incident in your community
- Identify times from the incident to each other point on the visual



FEMA

Planning Time Line



FEMA

Group Activity 2

Report Out Time!



FEMA

Skills

Match the skills required to perform an assessment with the identified areas.

- Waste Water Treatment facility public works or engineering
- Rescue fire service, law enforcement
- Medical public health or EMS



FEMA

Matching Skills

Who would evaluate:

- Structural issues involving bridges?
- Mass fatalities?
- Hazardous materials release?
- Communication outages?
- Debris issues?



FEMA

Group Activity 3

Who would possess the skills to evaluate:

A. Emergency Shelters

B. Schools

C. Industrial Hazardous Materials Facilities

D. Dams & Levees

E. Healthcare Facilities

F. Potable Water Treatment Facilities

G. Airports



FEMA

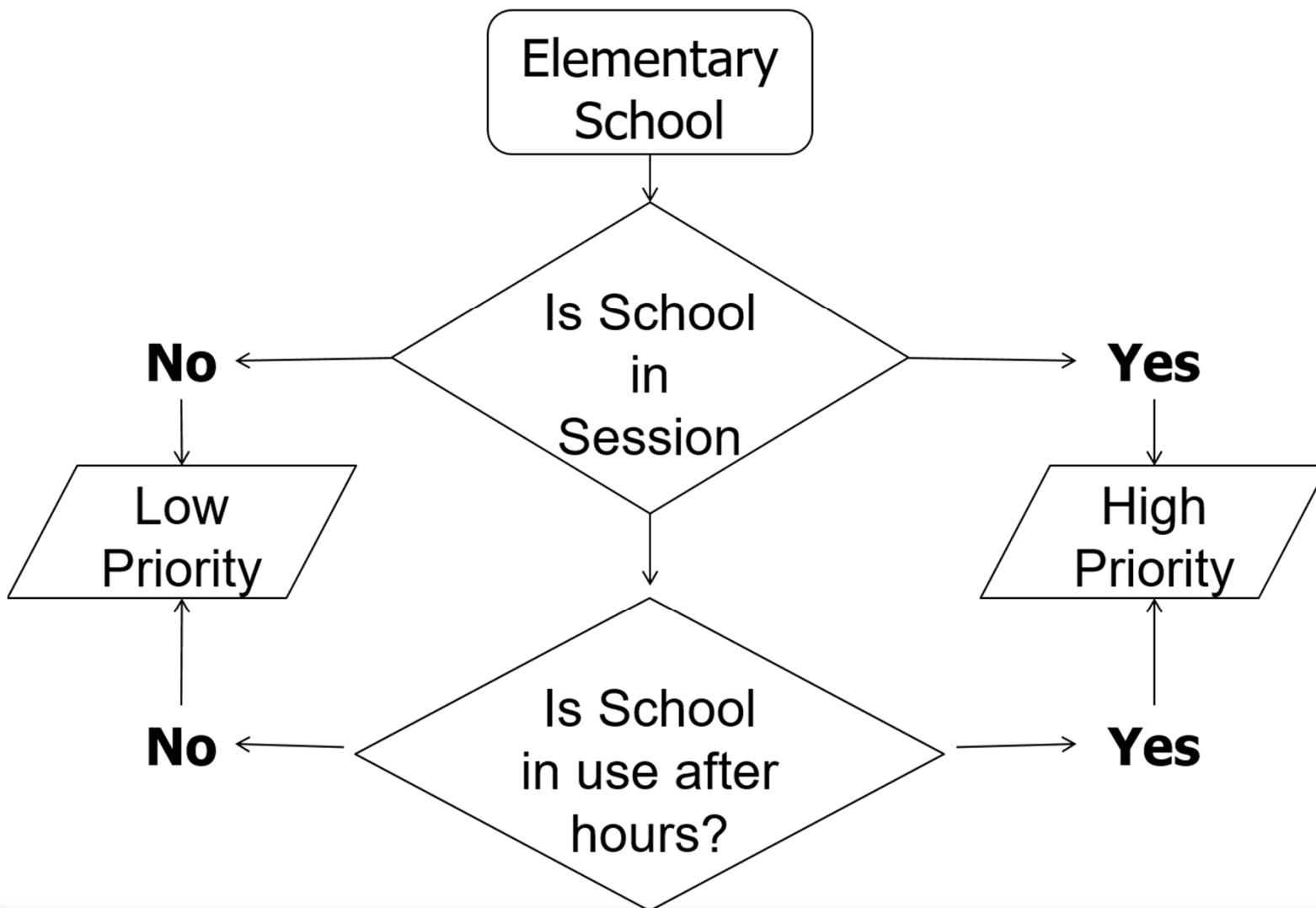
Group Activity 3

Report Out Time!



FEMA

Job Aids



Set Overall Priorities

Which is more important?

- Hospital or medical clinic?
- Hospital or nursing home?
- Nursing home or day care center?
- Day care center or school?
- School or nursing home?
- School or hospital?



FEMA

Factors

Variables may effect prioritization:

- Time (day or night)
- Season (winter, summer, tourist)
- Special community events
- Continuing or Developing threats



FEMA

Review

At the end of this unit participants will be able to:

- Describe the process for staffing a rapid needs assessment.
- Describe the basic tools required to prioritize the rapid needs assessment process



FEMA

And now

Take a 10 minute break!



FEMA